

EN54 CEILING SPEAKER

- 10W 100V LOUDSPEAKER
- SIZE 6.5" (165MM)
- SURFACE MOUNT
- EXCELLENT SOUND QUALITY
- FULLY CERTIFIED TO EN54-24



OVERVIEW

The SPCS-10W-65-EN54 is a 10W 100V surface mount ceiling loudspeaker, which has a 6.5" (165mm) full-range chassis providing excellent sound quality with speech and background music, and which is certified to EN54-24. The speaker is fitted with a 100V transformer which has four power adjustment tapings of 10W, 6W, 3W and 1.5W.

The SPCS-10W-65-EN54 has a powder coated metal chassis and grille, with the high quality finish giving good long-term protection and resistance to corrosion. The speaker's enclosure is ingress protection rated to IP21C. As standard the speaker is coloured to match RAL9010 'Pure White', however the speakers can be supplied in any four-digit RAL or NCS colour, as a special order.

The 100V loudspeaker line cabling is connected by means of a two-pin ceramic block, and for additional reliability a thermal fuse is provided and the speaker chassis is damp-resistant.

The loudspeaker is optionally available with a DC blocking capacitor fitted, in order to provide compatibility with DC loudspeaker line monitoring systems. The part number for this DC monitoring compatible version is SPCS-10W-65-EN54-DC.

EASE data is available for this speaker on request.

PRODUCT ATTRIBUTES

Power Tappings 10W / 6W / 3W / 1.5W

Frequency Range 290 – 23,400 Hz

Frequency Response 230 – 24,000 Hz

SPL 1W / 1m, peak 102.2 dB

SPL 1W / 4m, peak 90.2 dB

SPL Pmax / 4m, peak 100.2 dB

Sensitivity EN54-24, 1W / 4m 77.7 dB

Dispersion (-6dB, 500Hz) 180°

Dispersion (-6dB, 1KHz) 80°

Dispersion (-6dB, 2KHz) 106°

Dispersion (-6dB, 4KHz) 64°

Temperature Range -20 / +80 °C

Dimensions 170 x 75 mm

Weight (net) 1.30 kg

Colour RAL 9010 'Pure White'

Connector 2-pin ceramic block

Mounting Screws

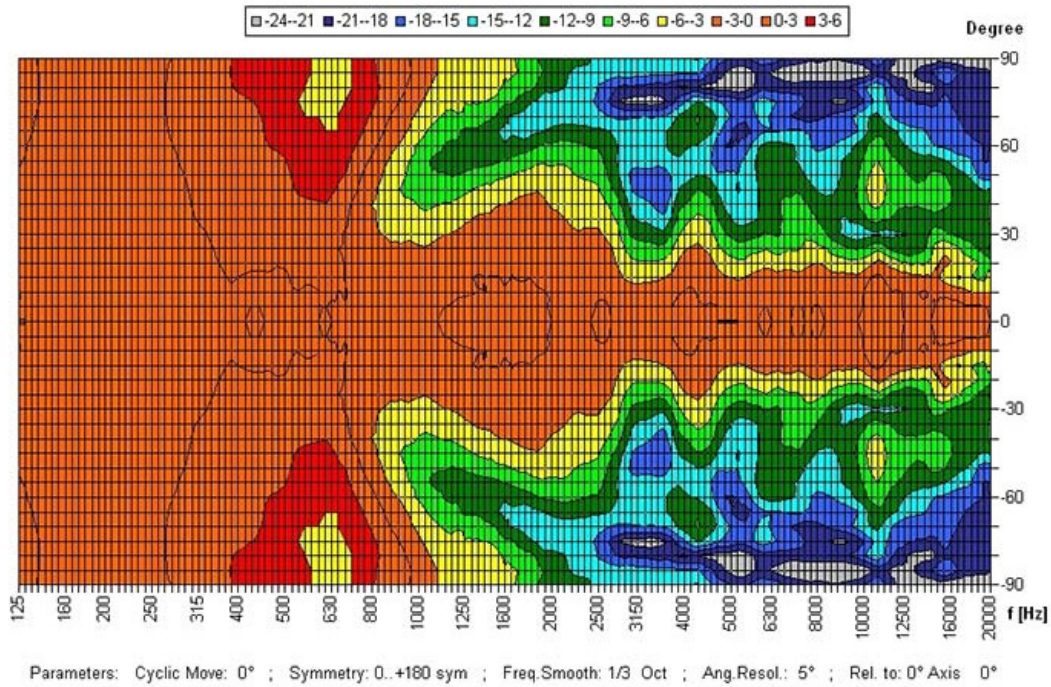
IP Rating IP21

Packing Unit 12

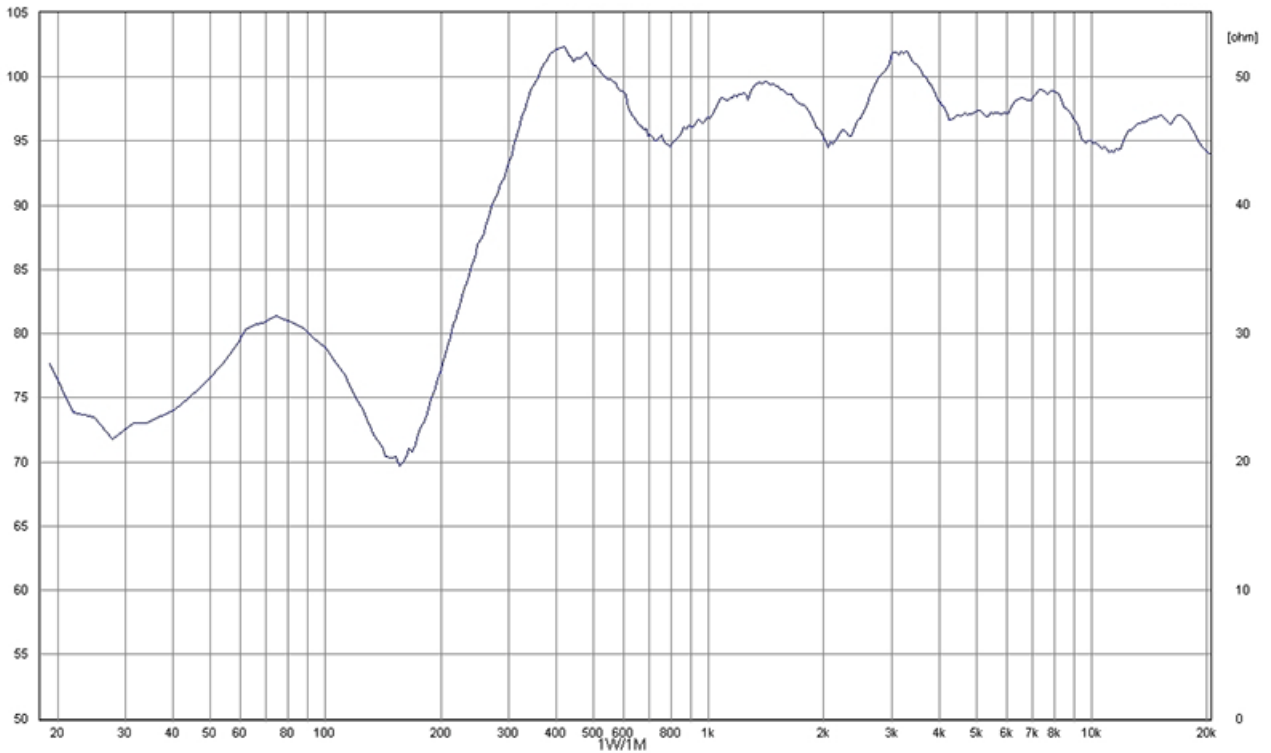
Maximum cable cross section 8mm²

Maximum cable cross section loop 2 x 2mm²

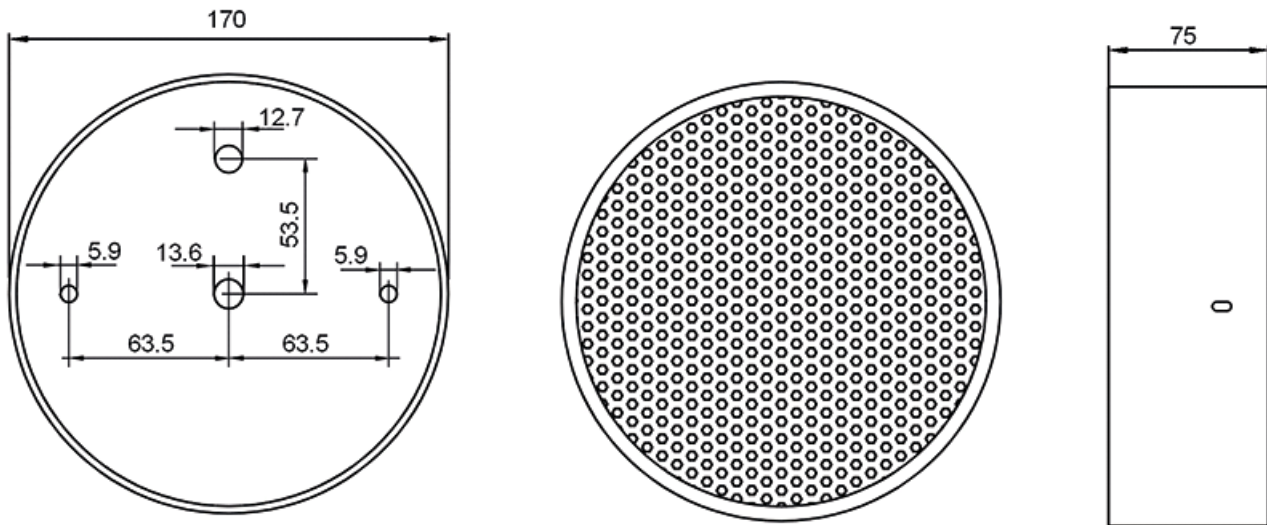
POLAR DIAGRAM



FREQUENCY RESPONSE DIAGRAM



DIMENSIONAL DIAGRAM



Measurements according to DIN EC 268-5

RoHS complaint (2011/65/EU)



This equipment is designed and manufactured to conform to the following EC standards:
 EMC: EN55103-1/E1, EN55103-2/E5, EN50121-4, ENV50204
 Safety: EN60065

Manufacturer

Application Solutions (Safety and Security) Limited
 Unit 17 - Cliffe Industrial Estate - Lewes - East Sussex - BN8 6JL - U.K.
 Tel: +44(0)1273 405411

www.asl-control.co.uk

All rights reserved.

Information contained in this document is believed to be accurate, however no representation or warranty is given and Application Solutions (Safety and Security) Limited assumes no liability with respect to the accuracy of such information.

